

The conversion of existing facilities into Alternate Care Sites involve four categories of action.

- The site/facility selection is a local or state responsibility, and technical guidance is provided for the selection of sites suitable for conversion.
- The building conversion is the subject of this brochure, and may be implemented by local, state, or federal authorities.
- The medical equipping of the site is a local or state responsibility, and technical guidance for the interface of equipment and building systems (e.g. electrical, mechanical, IT) is provided.
- The medical staffing of the ACS is a local, state, or federal responsibility; and not addressed in this information. However, facilities necessary for use by medical staff are described.



USACE COVID-19 Response Information

USACE has developed information resources, technical solutions, and implementation processes to prepare existing facilities for conversion into Alternate Care Sites (ACS) in order to assist FEMA, public health officials, State and Local Authorities in rapid, emergency response to the COVID-19 pandemic. These technical solutions have been developed in coordination with FEMA and the Department of Health and Human Services and may be implemented directly by State and Local authorities or by USACE under FEMA Mission Assignments. More detailed information is available on the public website:

<https://www.usace.army.mil/Coronavirus/Alternate-Care-Sites>

Available Resources Include:

- Detailed Implementation Process
- Site Assessment Templates
- FEMA Program Fact Sheet
- Performance Work Statements
- Alternate Care Site Concepts
- Wraparound Services Checklist
- Wraparound Services Sample Statement of Work
- ACS Security Preparation Guidelines
- Medical and Support Personnel Sample Scope of Work
- Inventory and Equipment Guidance
- Sample Patient Forms

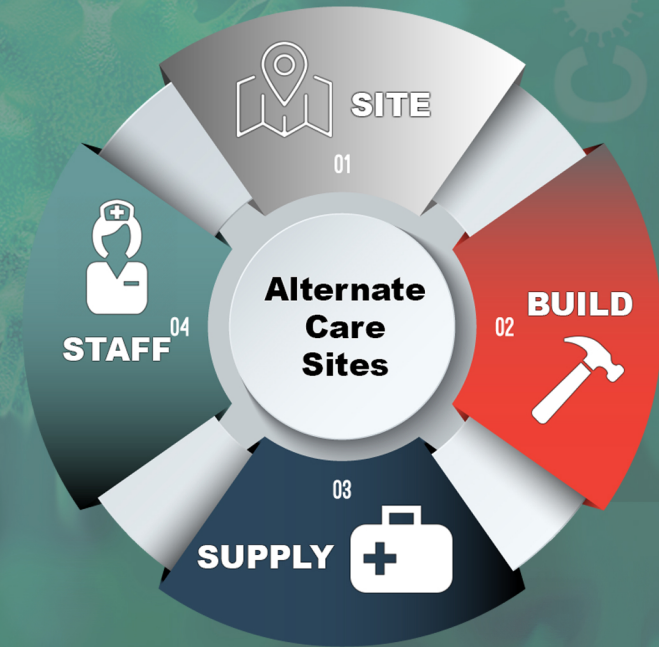
Informational brochures are available for three other ACS types:

- Hotel to Alternate Care (H2HC)
- Arena to Alternate Care (A2HC)
- Closed Hospital to Alternate Care (CH2HC)

Essayons!



U.S. Army Corps of Engineers (USACE)



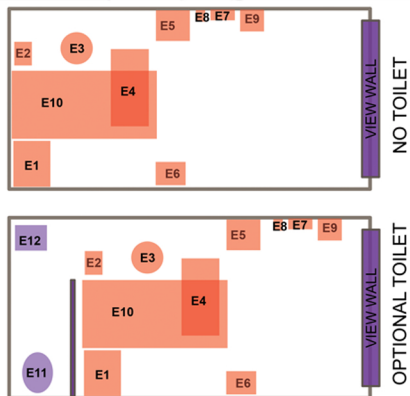
COVID-19 Emergency Response

Facility Resources

Containerized Medical Solutions (CMS) for Alternate Care Sites

SITE CONVERSION CONSIDERATIONS

- Converted facilities and sites will be ADA compliant only to the extent of the existing facility and site
- Site templates and standards are adapted from DoD Unified Facilities Criteria, which govern military construction requirements
- Local municipality/county/state standards should be discussed and agreed upon by municipality and the Construction Agent



CMS ALTERNATE CARE SITE CRITERIA

Alternate care sites should meet these criteria to the greatest extent possible.

- Improved Ground, i.e. concrete, hardscape, gravel, asphalt
- Interior space or outdoor shelter for CMS units
- Proximity to an existing, permanent medical hospital (10 mile/30 min)
- Readily available critical services (10 mile/30 min):
 - o Hazardous Waste Disposal
 - o Linen/Laundry
 - o Pharmacy
- State- or city-owned property preferred to facilitate leasing and permitting
- Existing redundant or emergency power supplies
- Existing Sprinkler and Fire Alarm Systems
- Space in facility or surrounding perimeter for temporary facilities (including medical waste, sanitary, soiled linen, hand washing, med supply/pharmacy)

CMS SITE MODIFICATIONS

- Convert shell containers to CMS patient spaces:
 - o Field-modify isolation room entry door
 - o Add louver with gravity damper
 - o Add exhaust fan with HEPA filtering
 - o Add mounted lighting
 - o Add emergency back-up power
 - o Add electrical and data outlets
 - o Add washable wall and floor covering
 - o Provide manual balancing damper for louver
 - o Provide utility chase if required
 - o Remove company logo, if any
- Convert containers for staff support functions
- Access control and perimeter fencing
- Compartmentalized Infection Control
 - o Clean/dirty areas
 - o PPE donning/doffing areas
- Establish or use existing Wi-Fi or LANs
- Eye/Hand wash stations
- Medical Gas (portable, piped or combination)
- Plumbing – facilities for staff and patients

Alternate Care Sites Implementation Process

Identify Potential Sites

Conduct Site Assessments

Secure Funding

Secure Property

Convert Site to Alternate Care

Secure Wraparound Services

Staff, Equip, and Supply Site

Operate Site

COVID-19 Case Peak



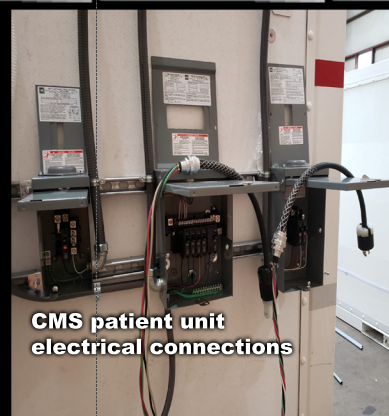
CMS outdoor site option



CMS with ramp



CMS patient space interior



CMS patient unit electrical connections



CMS patient units with ventilation installed